

1. First thing you need to do it to install the Bootloader app on your computer.
2. Turn the Masterpiece On and check the addresses order of the panels. You can check the panel order by going to Mode "Effects" and playing the "Test" effect. (Dimmer must be on 100%.) The test patter must go from top left LED panel to the bottom right LED panel.

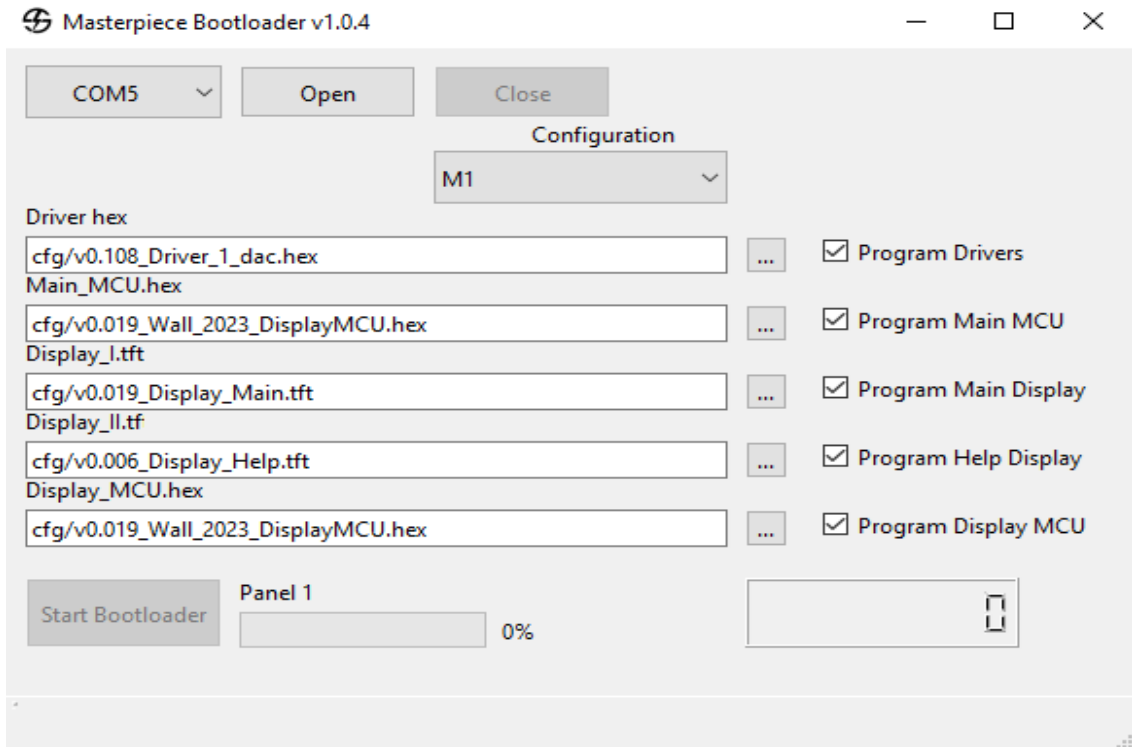


3. If the panels are not in the correct order, you must take the panel out and set the right address of the panel by DIP switch (see picture below) **If the addresses are not correct the Masterpiece will not work!**

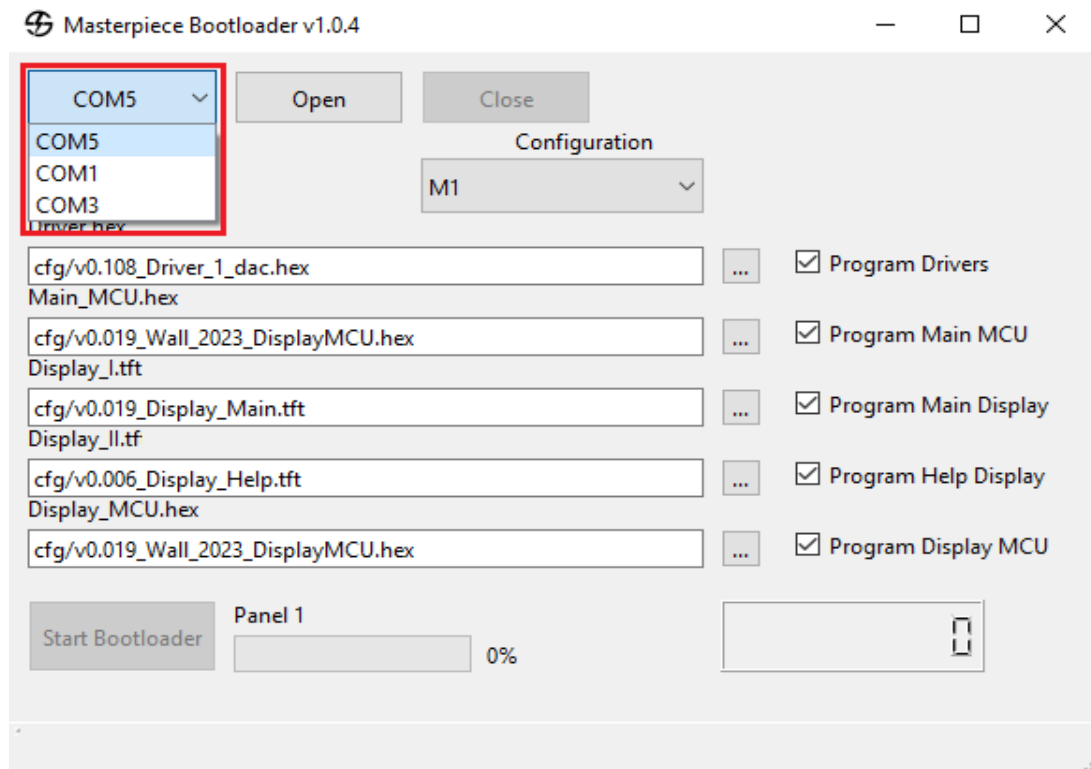
DIP switch panels chart

1	2	3	4
5	6	7	8
9	10	11	12
13	14	15	16

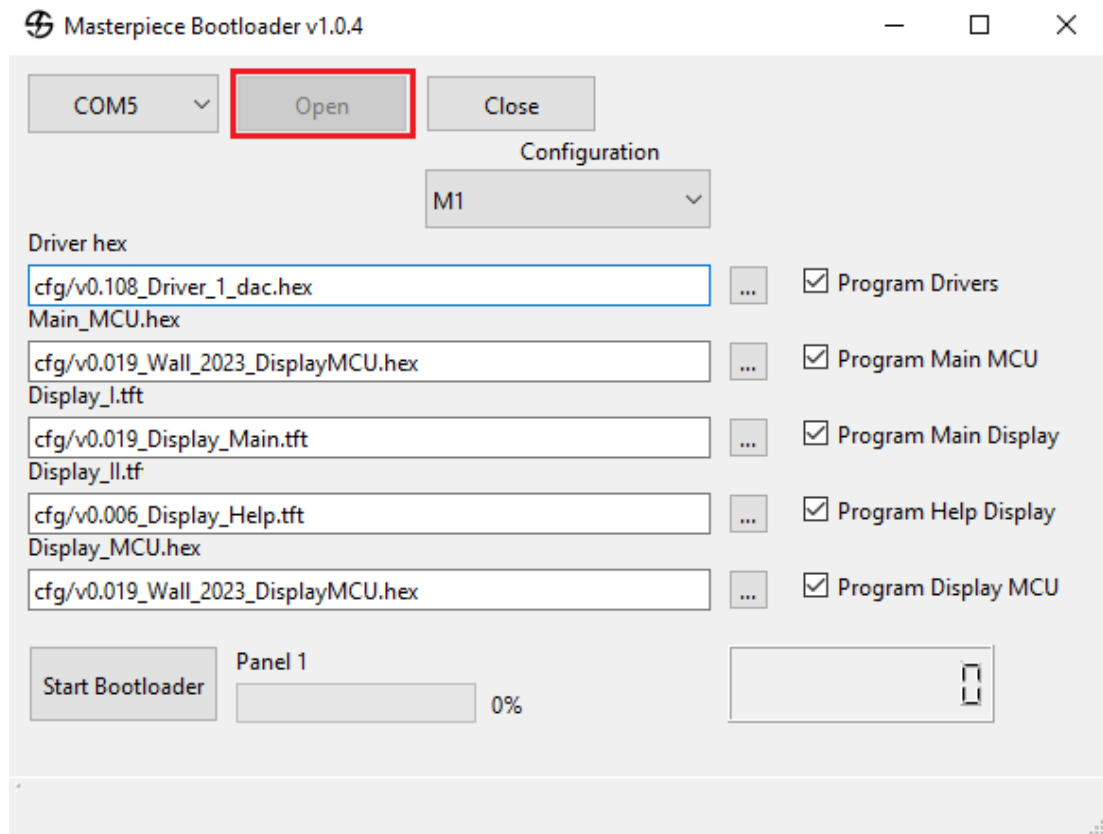
- Now, turn the Masterpiece off and plug the USB cable from your computer to the Masterpiece USB port.
- Open the Bootloader app. The files will load automatically.



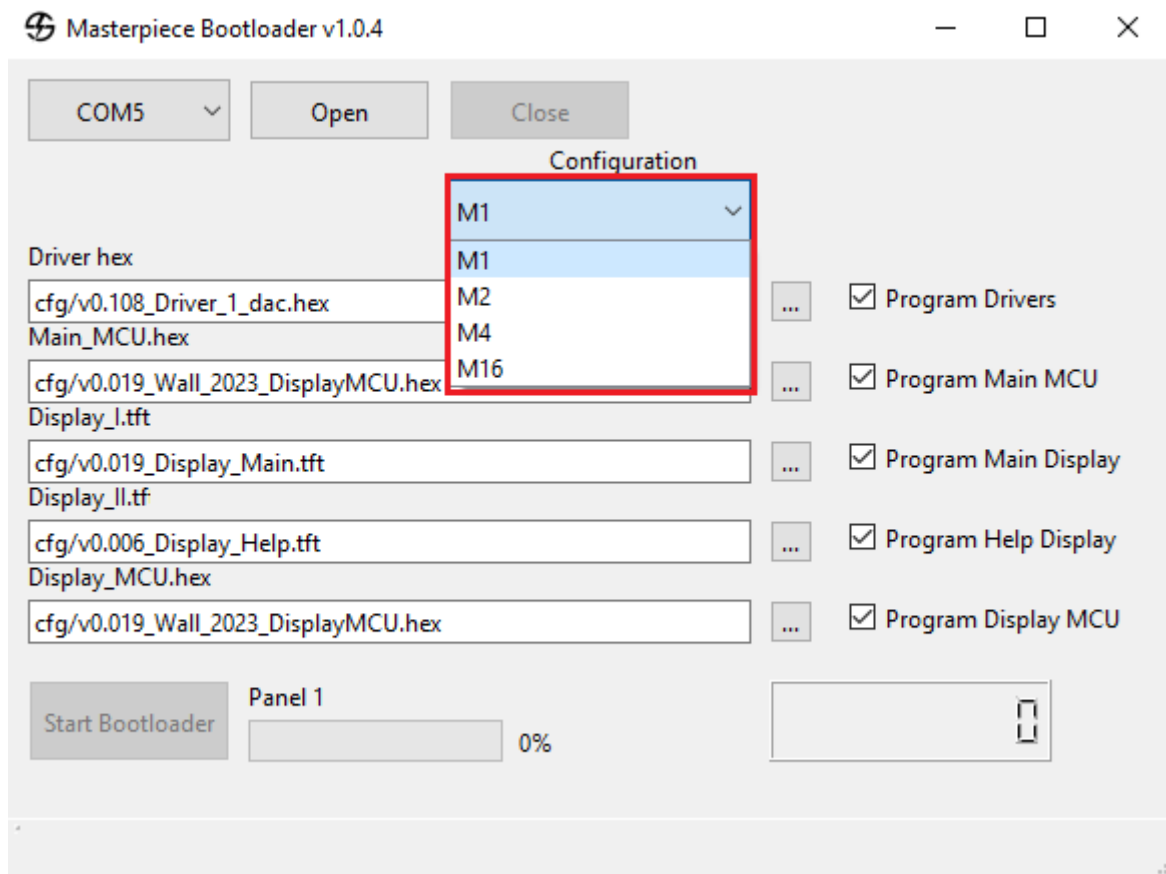
- Choose the USB port.



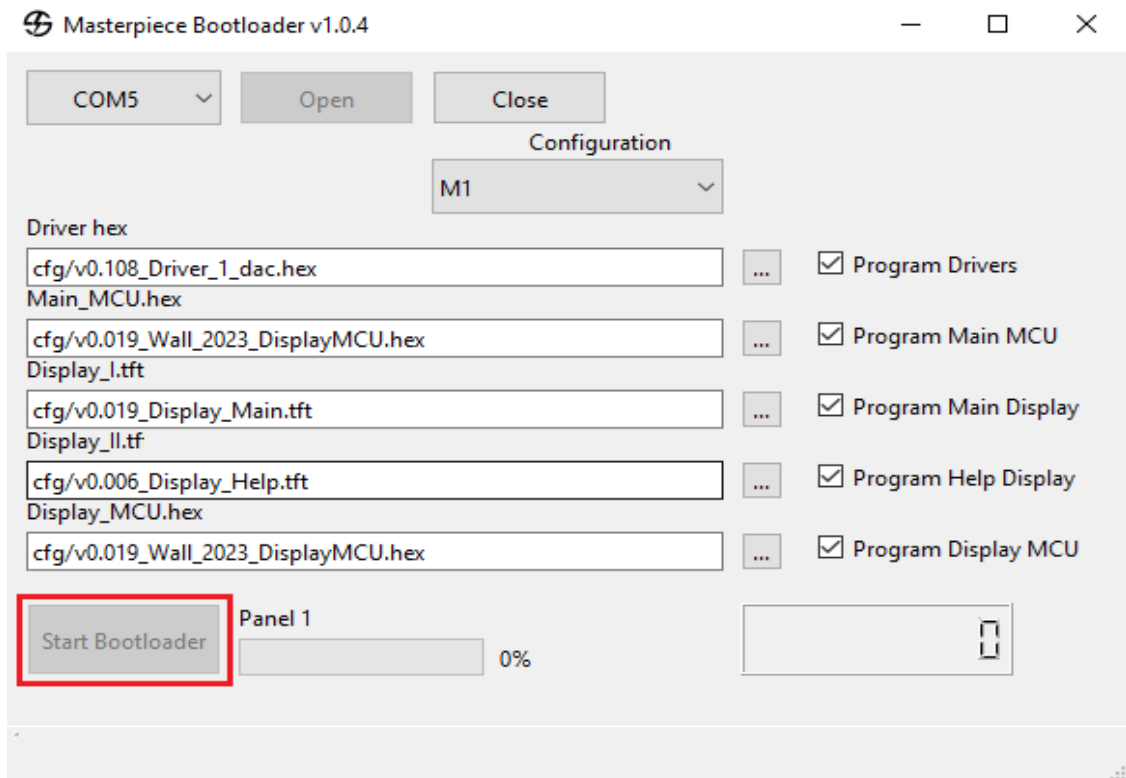
7. Open USB port.



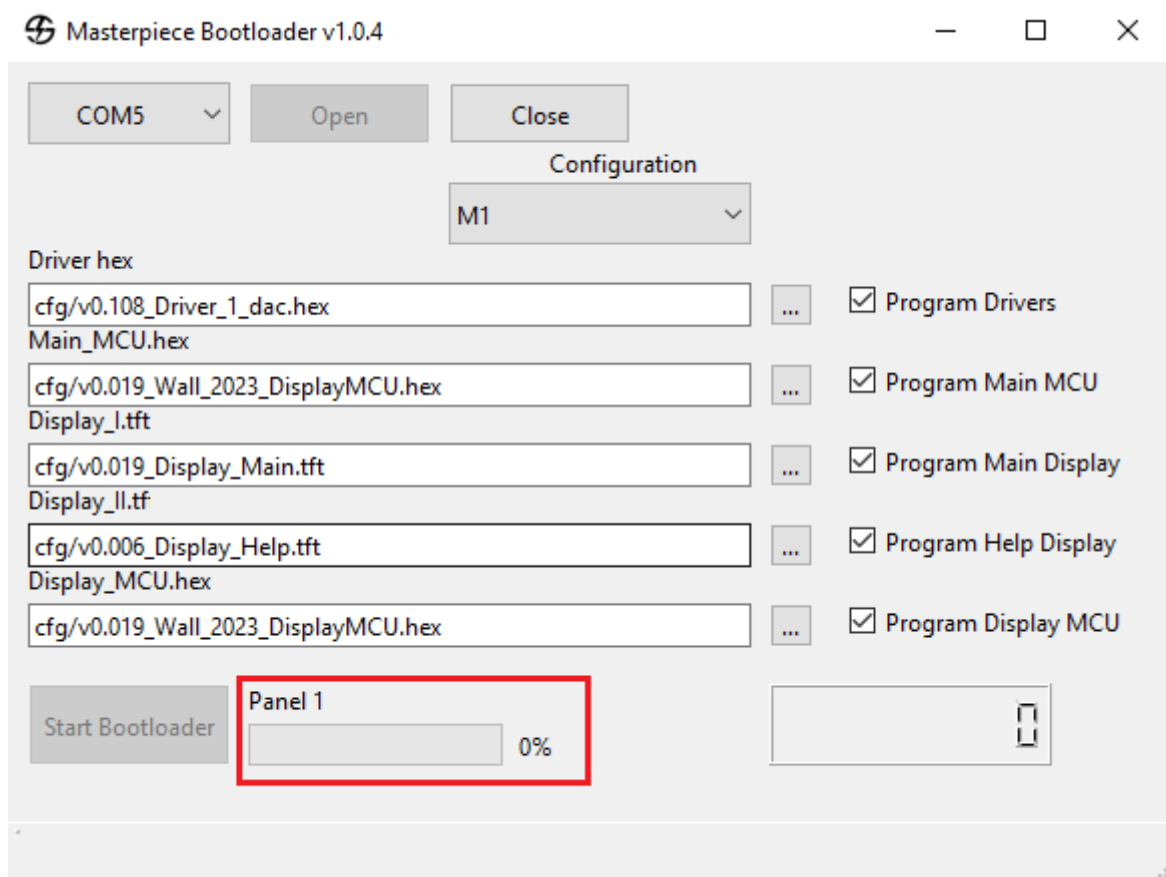
8. Choose Masterpiece configuration. The configuration is number of panels that you have in your device. For Masterpiece choose M16.



9. Click "Start Bootloader" button. **After clicking "Start bootloader" you must turn ON Masterpiece within 10 seconds.**



8. The update will last about 12.5 minutes. The process of installation will be seen in the bottom of the app window panel by panel.



9. After instalation the Masterpiece will restart itself. After restart wait around 30 seconds and then turn it Off and On again. Your Masterpiece is now updated.